

RUSH 2 MID^{GTX} & RUSH 2 MID^{GTX} WMN

63132/200&202

PRODUCT POSITIONING

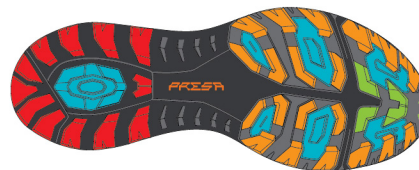
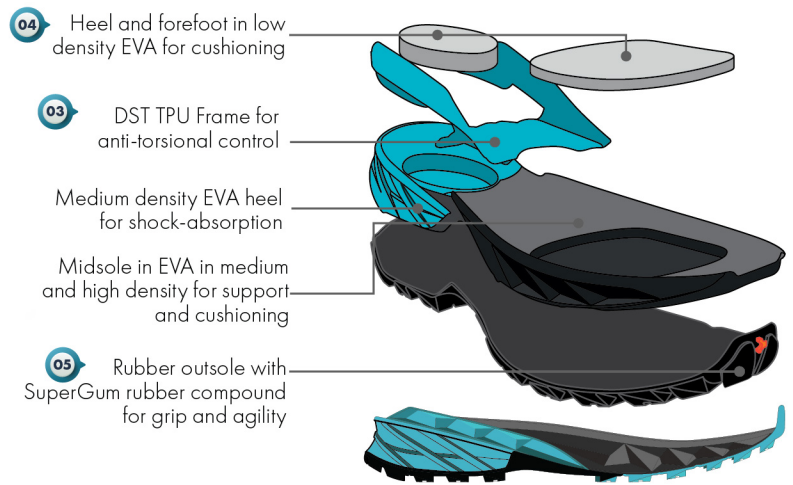
The updated Rush 2 Mid GTX strikes the perfect balance between light and fast and supportive. The mid-cut mesh and synthetic leather upper is backed by GORE-TEX® Invisible Fit to guarantee waterproof protection without sacrificing comfort, while underfoot the PRESA® sole and DST chassis delivers outstanding stability and traction. With the feel of a running shoe and the support of a hiking boot, the Rush Mid 2 GTX is the perfect quiver-of-one shoe for a variety of trail pursuits.



M 63132/200



W 63132/202



- THRUST AREA
- BRAKING AREA
- MAXIMUM GRIP AREA
- STABILITY AREA

FEATURES AND BENEFITS

- 01** **Recycled Upper with GORE-TEX®:** Durable fabric upper with recycled content is lightweight and breathable, backed by GORE-TEX® Invisible Fit BlueSign™ for waterproof protection
- 02** **TPU Rand:** For extra toe protection
- 03** **DST Frame:** Dynamic Stabilizer Torsion frame gives rearfoot stability and torsion control
- 04** **Midsole:** Dual-density compression molded EVA for lightweight cushioning and responsiveness
- 05** **Outsole:** PRESA® outsole works with the midsole to provide mechanical impact absorption, and our SuperGum rubber compound provides confidence-inspiring traction.

SPECIFICATIONS

- Upper: **Eco Mesh + Eco Microfiber + Eco Film**
- Lining: GORE-TEX® Invisible Fit BlueSign™
- Insole: Strobel (PSC) + DST TPU Frame
- Midsole: 2D EVA
- Outsole: PRESA® HIK-03 / SuperGum
- Last: Men's - SHCM
Women's - SHCM
- Sizes: Men's - 40-46 (1/2 sizes); 47-48 (whole sizes)
Women's - 36-42 (1/2 sizes)
- Weight: Men's - 415g; 14.6 oz (1/2 pair size 42)
Women's - 345g; 12.1 oz (1/2 pair size 38)
- Origin: Vietnam

TECHNOLOGIES



TECHNOLOGY - MATERIALS - CONSTRUCTION

PRESA® Outsole with Interactive Kinetic System™ (IKS) – PRESA® is SCARPA's proprietary outsole brand, born out of 80+ years of technical outsole design experience, to deliver the best traction solutions available. IKS technology features seven internal impact absorption "domes" in the outsole and midsole that function just like shock absorbers, compressing upon impact to absorb energy. The impact zones are anatomically mapped to provide additional shock exactly where it is needed the most, while maintained stability outside those zones. The midsole material itself is dual-density EVA, providing additional lightweight shock absorption. Incorporated into the midsole is a Dynamic Stabilizer Torsion frame made of TPU (thermoplastic urethane). The DST frame wraps under the arch and extends back along both sides of the heel, for outstanding rearfoot stability and torsion control. The lug design of the outsole provides confidence-inspiring traction via 4mm deep lugs and our SuperGum rubber compound, which balances high friction with durability.

SuperGum Rubber – Exclusive to SCARPA, the SuperGum rubber compound was developed to provide equal or better slip resistance as compared to other high-friction rubbers but with vastly superior abrasion resistance. It was formulated to deliver high friction performance in both wet and dry conditions, but at the same time offers 3 times the abrasion resistance. SuperGum is the ideal rubber compound for SCARPA approach shoes.

GORE-TEX® Invisible Fit Bluesign™ – This GORE-TEX® Invisible Fit technology consists of a waterproof breathable membrane laminated directly to the backside of the upper, with a traditional heel lining construction, improving fit and internal comfort. This GORE-TEX® fabric is produced in a Bluesign® certified process, without the use of a DWR (Durable Water-repellent) treatment on the laminate. The surface treatment of the membrane is instead accomplished with a PFCec-free solution, vastly reducing the chemical footprint of the process, while still providing the optimal combination of breathability and waterproof protection, so feet stay dry and comfortable.

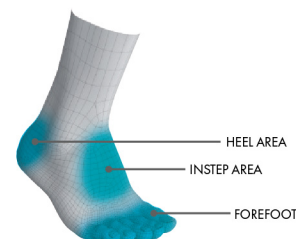
SCARPA Planet Friendly – Our products tread the most wonderful and unspoiled landscapes on earth. We feel we must do our best to preserve these landscapes. "Planet Friendly", products made of environment-friendly materials refer to products in which materials and processes are specifically chosen for their environmentally friendly characteristics.

**ACTIVfit
SYSTEM**

ACTIVfit Technology – ACTIVfit is a construction system that employs different last shapes, material combinations and construction techniques to provide the optimal fit and performance for the intended activity.

Last /Fit Description:

SHCM last. Medium volume heel and midfoot fit, with a rounded, more open toe profile. Leans more towards a comfort fit versus high precision, but not sloppy. Fits a lot of foot shapes.

**AVAILABLE COLORS**

MEN'S | ANTHRACITE/OTTANIO



MEN'S | MOSS/SULPHUR



WOMEN'S | BALTIC BLUE/SUNNY LIME



WOMEN'S | SAGE/DUSTY YELLOW