

# MOJITO WRAP BIO

**32709/350**

## PRODUCT POSITIONING

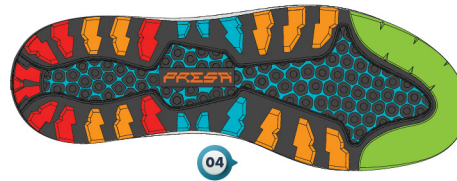
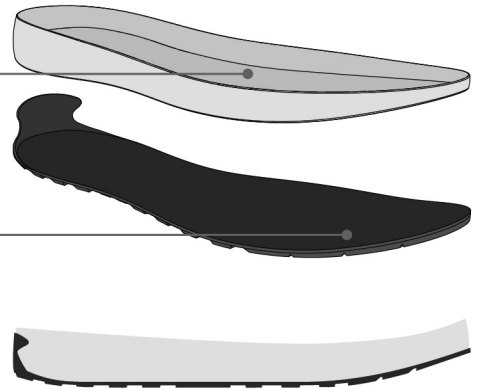
The Mojito Wrap Bio is a true statement to SCARPA's global commitment towards sustainability. From the 100% biodegradable upper to the biobased rubber outsole, the Mojito Wrap Bio is a true statement to SCARPA's global commitment towards sustainability.



32709/350

**02** Biodegradable EVA midsole medium density for maximum stability

Biodegradable rubber outsole ensures excellent grip and durability comparable to a synthetic rubber



- THRUST AREA
- BRAKING AREA
- MAXIMUM GRIP AREA
- STABILITY AREA

## FEATURES AND BENEFITS

- 01** Upper: Bio based knitted bamboo
- 02** Midsole: Bio based EVA sugar cane
- 03** Rand: Bio based EVA + natural rubber
- 04** Outsole: Bio based natural rubber outsole
- 05** Packaging: Recycled cardboard and paper packaging.

## SPECIFICATIONS

- Upper: **Bio Knit Fabric**
- Lining: **Bio Stretch Fabric**
- Insole: Strobel
- Outsole: PRESA® URB-04
- Last: BC
- Sizes: 36-46 (½ sizes); 47-48 (whole sizes)
- Weight: 335g; 11.8oz (½ pair, size 42)
- Origin: Italy

## TECHNOLOGIES



## TECHNOLOGY - MATERIALS - CONSTRUCTION

**PRESA® Outsole:** A project focused on sustainability. The midsole and the rubber outsole are certified 100% biodegradable.

**Upper** - The upper is a bio knit fabric, that is 100% biodegradable at the end of the products life.

**Lining** - The lining is made from sugar cane derived fibers, and are 100% biodegradable.

**SCARPA Planet Friendly** – Our products tread the most wonderful and unspoiled landscapes on earth. We feel we must do our best to preserve these landscapes. "Planet Friendly", products made of environment-friendly materials refer to products in which materials and processes are specifically chosen for their environmentally friendly characteristics.

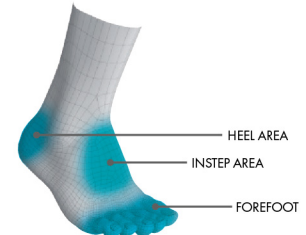
**Strobel Construction** - Also known as slip lasted construction, this is the preferred construction method for lightweight, flexible outdoor footwear like light hiking and trail running shoes. The upper is stitched with a special machine in the form of a one piece "sock", which is then slipped over the last and tightly laced. After preparing both the upper and midsole/ outsole unit, the two are then cemented together. The bottom of the sock, the "strobel" is a flexible fabric with a thin layer of EVA on top of it, providing a little extra underfoot cushion.



**ACTIVfit Technology** – ACTIVfit is a construction system that employs different last shapes, material combinations and construction techniques to provide the optimal fit and performance for the intended activity.

### Last /Fit Description:

BC last. Medium width heel and midfoot fit, with a slightly tapered toe shape. The lacing to the toe allows for great customization for a variety of foot shapes.



### AVAILABLE COLORS



BLACK



MILITARY



NATURAL