

ZODIAC TECH^{GTX} & ZODIAC TECH^{GTX} WMN

71101/200 & 202

PRODUCT POSITIONING

A favorite of mountain guides and rescue professionals around the world, the Zodiac Tech GTX sets the standard for lightweight, technical mountain boots. Innovative BAS Technology redefines underfoot security and precision, while the premium leather upper and external heel containment provide all-day support, stability and protection. If your plans involve long days move through technical mountain terrain, the Zodiac Tech GTX has you covered.

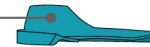


M 71100/200



W 71100/202

TPU crampon insert with differentiated thickness



Medium/high density PU midsole for support and stability



TPU film for protection of areas exposed to abrasion

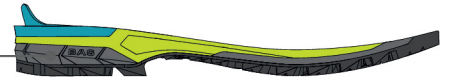


Low/medium density PU inserts for adaptability to the terrain



Vibram® rubber outsole with Mont rubber compound for durability

Bascula Adaptive System



- THRUST AREA
- BRAKING AREA
- MAXIMUM GRIP AREA

FEATURES AND BENEFITS

- 01** **Upper:** Perwanger Nepal Suede Leather with a special tanning process that bonds to the fibers for water-repellency durability and breathability.
- 02** **Full perimeter rubber and PU rand** for maximum performance and protection.
- 03** **Sock-Fit XT:** one-piece tongue and ankle collar construction reduces bulk and creates a snug fit.
- 04** **Bascula Adaptive System:** BAS Midsole allows lugs to independently adapt to terrain, maintaining better ground contact for stability and traction.
- 05** **Molded Heel Counter:** External molded heel counter provides rear foot stability and containment

SPECIFICATIONS

- Upper: 1.8mm Suede Perwanger Nepal
- Lining: GORE-TEX® Performance Comfort BlueSign
- Insole: Pro-Fiber 20
- Midsole: 2D PU
- Outsole: Vibram® BAS Precision Cramp / Mont
- Last: BZH
- Sizes: Men's - 39-47 (½ sizes); 48 (whole sizes)
Women's - 37-42 (½ sizes)
- Weight: Men's - 700g; 1 lb 8.7oz (½ pair, size 42)
Women's - 610g; 1 lb 5.5oz (½ pair size 38)
- Origin: Italy

TECHNOLOGIES



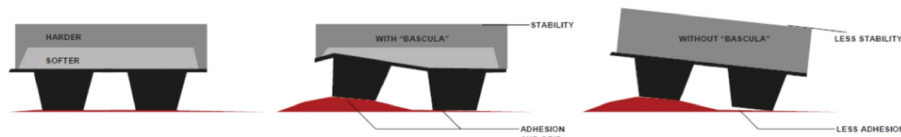
TECHNOLOGY - MATERIALS - CONSTRUCTION

GORE-TEX® Bluesign™ – This GORE-TEX® waterproof breathable technology is produced in a Bluesign® certified process, without the use of a DWR (Durable Waterproof repellent) treatment on the laminate. The surface treatment of the membrane is instead accomplished with a PFCec-free solution, vastly reducing the chemical footprint of the process. This membrane still provides the optimal combination of breathability and waterproof protection, so feet stay dry and comfortable, even in changing conditions, and it excels in a wide range of outdoor activities in moderate to cool conditions – from challenging pursuits to everyday use.

Vibram® Outsole – The Vibram® outsole featuring Mont rubber compound is optimized for mountaineering activities. Vibram® Mont compound was specifically developed to provide the highest reliability in the most difficult terrain at lower temperatures, and has been tested to verify performance on the highest peaks in the world. The Mont compound is a firmer rubber for added durability and secure crampon interface.

Perwanger® Nepal Suede leather – Perwanger is a family owned Italian leather tannery that has been in operation since 1780. They are recognized for making some of the finest and most durable leather for heavy duty outdoor applications like mountaineering and trekking. All Perwanger leathers are the result of a careful process. Beginning with the hides, which are carefully selected from alpine cattle from the mountains of Northern Italy, the leather then undergoes special processing and finishing stages to deliver an extremely durable product, with a smooth and consistent surface grain that is highly water resistant and very durable – perfect for SCARPA mountaineering and trekking boots.

Bascula Adaptive System (BAS): BAS midsole allows lugs to independently adapt to the terrain, maintaining better ground contact. The midsole has two densities of PU, with softer zones that allow the lugs to independently adapt to surface irregularities, improving grip and stability.



SOCK-FITXT BY SCARPA

Sock-Fit XT System – The tongue and ankle collar are constructed in a single piece of elastic S-tech Shoeller® breathable and water-resistant fabric, minimizing seams and reducing bulk for a precision fit and reduced weight.

ACTIVfit SYSTEM

ACTIVfit Technology – ACTIVfit is a construction system that employs different last shapes, material combinations and construction techniques to provide the optimal fit and performance for the intended activity.

Last / Fit Description - BZH last / developed for a precision fit on heavy approaches and for alpine climbing capability, this last runs a little narrower than normal, but the lace-to-toe system accommodates a surprising number of foot shapes. Great heel hold and a performance fit throughout.

