

# SPIN PLANET & SPIN PLANET<sup>WMN</sup>

# 33063/350 & 352

## PRODUCT POSITIONING

Light on your feet and light on the planet, our latest addition to the Spin family is a versatile and highly cushioned trail running shoe with serious sustainability chops. The highly breathable upper is made from 100% recycled content, while the midsole, outsole and footbed all feature significant recycled content as well. If you are as serious about sustainability as you are about trail running, the Spin Planet is your solution for the long haul.



**M** 33063/350



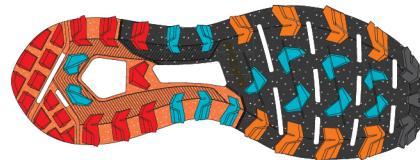
**W** 33063/352

High volume cushioned midsole in medium density EVA for stability and thrust response (45% recycled)

PRESA® outsole with ATR compound which combines high grip and durability (30% recycled rubber)



**STACK**  
Heel 28mm/Toe 24mm  
Drop 4mm



- PROPULSION AREA
- BRAKING AREA
- MAXIMUM GRIP AREA
- STABILITY AREA

## FEATURES AND BENEFITS

- 01** **Recycled Upper:** Highly breathable upper made with 100% recycled content. Axial TR tech tongue means a low-bulk, wrapping closure.
- 02** **EXO Construction:** Internal support matrix wraps midfoot and adds stability.
- 03** **Footbed:** EVA footbed with 20% recycled content
- 04** **Midsole:** High volume cushioned midsole with 45% recycled content adds stability and provides longer lasting cushioning
- 05** **Outsole:** PRESA® outsole with ATR compound has 30% recycled rubber and 4.5mm lugs for great traction

## SPECIFICATIONS

- Upper: **Recycled Mesh + Recycled Microfiber**
- Lining: **Recycled Microfiber**
- Insole: Strobel
- Midsole: **EVA - 45% Recycled** (4mm Drop)
- Outsole: PRESA® TRN-06
- Last: Men's - ARSP  
Women's - ARSPW
- Sizes: Men's - 40-46 (½ sizes); 47-48 (whole sizes)  
Women's - 36-43 (½ sizes)
- Weight: Men's - 290g; 10.2oz (½ pair, size 42)  
Women's - 260g; 9.2oz (½ pair size 38)
- Origin: Vietnam

## TECHNOLOGIES



## TECHNOLOGY - MATERIALS - CONSTRUCTION

**PRESA® TRN-06 Outsole** – SCARPA's expertise is readily evident in our proprietary PRESA outsole collection, born from 80+ years of footwear design expertise and craftsmanship. PRESA outsoles are purpose-designed specifically for each product by SCARPA's expert technicians, and rigorously tested in the field to ensure they meet our performance requirements. Careful lug design and placement ensures optimized traction and performance while minimizing weight. With **30% recycled rubber**, the TRN-06 outsole is heavy on performance, but light on the planet, providing additional peace of mind as you pursue your outdoor adventures.

**EXO Construction** – Highly breathable upper mesh is backed by our EXO internal support matrix, adding lateral upper stability and a foot-wrapping fit. External welded PU reinforcements on the upper add additional structure, support and abrasion resistance.

**Axial TR Tech Construction** – An idea borrowed from our market-leading expertise in backcountry ski boots, the Axial TR Tech construction features a tongue that seamlessly interfaces with the upper on the medial side and use a minimal overlap and partial Sockfit-style wrap on the lateral side. This delivers a minimal yet supportive and wrapping fit across the instep, reducing weight and bulk.

**SCARPA Planet Friendly** – Our products tread the most wonderful and unspoiled landscapes on earth. We feel we must do our best to preserve these landscapes. "Planet Friendly", products made of environment-friendly materials refer to products in which materials and processes are specifically chosen for their environmentally friendly characteristics.

**FIT:**  
ARSP last. Medium minus heel and midfoot fit, with a slightly narrow, lower volume forefoot. A more precise fit for running in technical, rocky terrain or scrambling.

## AVAILABLE COLORS



MEN'S | AZURE / BLACK



MEN'S | ANTHRACITE / SAFFRON



WOMEN'S | AQUA / NILE BLUE



WOMEN'S | DEEP RED / SAFFRON