

# MORaine MID WP & MORaine MID WMN WP

## 63056/211 & 212

### PRODUCT POSITIONING

Perfect for novice or veteran alike, the Moraine Mid WP is a super versatile hiking shoe that delivers comfort, support and traction in a nimble package. The premium nubuck upper is supportive and durable, and the waterproof breathable lining delivers the weather protection you need on the trail. A RECCO receiver makes the wearer searchable out in the wilderness, for added peace of mind on any adventure.



**M** 63056/211



**W** 63056/212

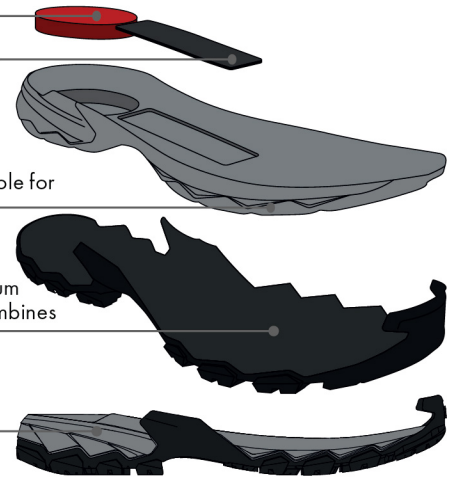
Low density EVA insert for cushioning

TPU insert for stability and anti-torsional control

Medium density EVA midsole for cushioning and stability

Rubber outsole with SuperGum rubber compound, which combines high grip and durability

Design with grooves for stability and cushioning



- THRUST AREA
- BRAKING AREA
- MAXIMUM GRIP AREA
- STABILITY AREA

### FEATURES AND BENEFITS

- 01** **Upper:** Premium oiled nubuck leather. Special tanning process bond to the fibers for water-repellency, durability and breathability, with recycled fabric for reduced impact.
- 02** **Lining:** PFAS Free Waterproof Membrane
- 03** **TPU Heel:** External molded TPU heel counter provides rearfoot stability.
- 04** **RECCO:** RECCO reflector makes the wearer searchable for added peace of mind.
- 05** **Outsole:** PRESA® outsole works with our SuperGum rubber compound to provide confidence-inspiring traction.

### SPECIFICATIONS

- Upper:** 2.0mm - 2.2mm Oiled Nubuck Leather with 100% Recycled Fabric
- Lining:** PFAS Free Waterproof Membrane
- Insole:** Nylon Insert
- Midsole:** 2D EVA-CM
- Outsole:** PRESA® HIK-04 / SuperGum
- Last:** Men's - RHA  
Women's - RHAW
- Sizes:** Men's - 40-47 (½ sizes); 48-50 (whole sizes)  
Women's - 36-42 (½ sizes)
- Weight:** Men's - 585g; 11lb 4.6oz (½ pair size 42)  
Women's - 495g; 11lb 2.5oz (½ pair size 38)
- Origin:** Vietnam

### TECHNOLOGIES



**TECHNOLOGY - MATERIALS - CONSTRUCTION**

**PRESA® Outsole** – PRESA® is SCARPA's proprietary outsole brand, born out of 80+ years of technical outsole design experience, to deliver the best traction solutions available. Each PRESA® sole is carefully developed thinking about the context of use of the shoes. PRESA® combines midsoles, compounds and design to get the most out of the sole, it is in fact the careful mix of these three elements that makes PRESA® products so innovative.

**SuperGum Rubber** – Exclusive to SCARPA, the SuperGum rubber compound was developed to provide equal or better slip resistance as compared to other high-friction rubbers but with vastly superior abrasion resistance. It was formulated to deliver high friction performance in both wet and dry conditions, but at the same time offers 3 times the abrasion resistance. SuperGum is the ideal rubber compound for SCARPA approach shoes.

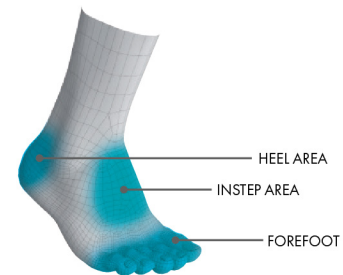
**PFAS Free Waterproof Membrane** - A PU based waterproof-breathable membrane that is free of PFA's and protects the user from inclement conditions.

**RECCO® Technology** - SCARPA® is the first brand to integrate the RECCO® system in its trail products. It has proven a very effective solution and been adopted by an extensive and expanding network of ski resorts, helicopter skiing operations, parks, and search-and-rescue organizations in North and South America, Europe and Japan. RECCO® technology enables rapid directional pinpointing of a victim's precise location using harmonic radar. The two-part system consists of a RECCO® detector used by professional rescue teams and RECCO® reflectors that are integrated into the footwear.

**SCARPA Planet Friendly** – Our products tread the most wonderful and unspoiled landscapes on earth. We feel we must do our best to preserve these landscapes. "Planet Friendly", products made of environment-friendly materials refer to products in which materials and processes are specifically chosen for their environmentally friendly characteristics.

**ACTIVfit**  
SYSTEM

**ACTIVfit Technology** – ACTIVfit is a construction system that develops different lasts, soles and models designed specifically for women or men feet. The models are designed and constructed for the best performance in various outdoor activities. Thanks to its experience and research, SCARPA® offers absolute comfort. When we say "absolute", we think of a subjective benefit becoming objective comfort. This line establishes a high quality standard for better performance, comfort, style and durability.

**ACTIVimpact**  
TECHNOLOGY

**ACTIVimpact Technology** – ACTIVimpact is a technology applied to the soles construction that uses materials with physical and chemical characteristics that absorb negative impacts with the ground and increase shock-absorbing features exploiting the utmost energy used during the activity.

**AVAILABLE COLORS**

MEN'S | ANTHRACITE



MEN'S | FOSSIL BROWN



WOMEN'S | MINERAL



WOMEN'S | ARCTIC